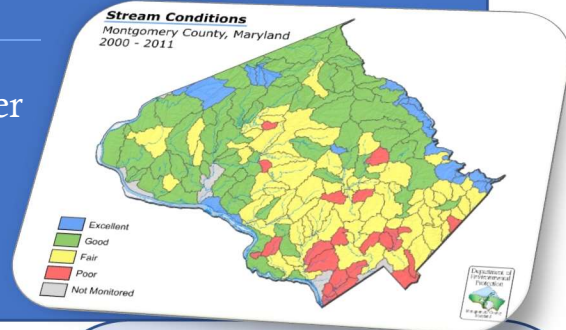


Action Alert!

MoCo “Septic Surveys” Threaten Clean Water

Quick Email to County Executive for Clean Water

Sewer sprawl = Less clean water for all



Promoting Sewer Extensions in Low Density & Rural Areas Is Not Smart Growth!

It's time to get active again. Montgomery County's Department of Environmental Protection (DEP) and Department of Permitting Services (DPS) are conducting flawed “septic surveys” in a back-door effort to sprawl sewer lines into low density and rural areas.

Special interest groups are promoting the use of these “septic surveys” to convert lots from septic systems to sewer service. The most egregious aspect is that properties are being recommended for sewer service that do not even have failed or potentially failing septic systems.

Why this matters: Once sewer service is made available, water quality and the environment inevitably degrade due to rezoning and higher density development. The resulting increased impervious surfaces promote increased stormwater runoff that degrades streams with sediment and contaminants. WSSC has already proposed an \$83M move of the Potomac Water Filtration Plant's water intake to avoid stormwater-borne contaminants caused by sewer-enabled high-density development. We must, again, tell the County that clean drinking water matters!

Take action: Please send an email – see box at right. Customize if desired by including sewage gallons spilled in your stream basin (see next page for list)

Take Action

Email: ocemail@montgomerycountymd.gov

Cc: county.council@montgomerycountymd.gov

Bcc: kbawer@msn.com

Subject: Pause DEP “Septic Surveys”

SAMPLE TEXT – CUSTOMIZE WITH SPILL DATA IN LIST BELOW

Dear County Executive Leggett:

I am asking for a common sense pause in DEP “septic surveys”, including the North Potomac Highlands septic survey, until the public and Council can vet the survey process and provide feedback.

I am outraged that the County wants to push sewer pipes into low density areas which will threaten our clean streams. WSSC spilled more than 9 million gallons of raw sewage into streams in the last 3 years including local streams in Montgomery County. [SEE LIST BELOW]

Do not allow DEP's flawed “septic surveys” to sprawl sewer lines into our long protected low density and rural areas.

Our clean water matters!

Sincerely,

Prepared by Montgomery Coalition to Stop Sewer Sprawl*

(*affiliated with the Montgomery County Stormwater Partners Network)

For more information, contact Ken Bawer: kbawer@msn.com



Sewer System Spills by Stream Basin

(Source: <https://www.wsscwater.com/customer-service/emergency-sewerwater-problems/sanitary-sewer-overflow-reports.html>)

BASIN NAME	2015	2016	2017	Total Gallons of Raw Sewage Spilled
BEVERDAM BRANCH	282	10,904	1,217	12,403
BROAD CREEK	646,862	990,783	143,462	1,781,107
CABIN JOHN	4,612	1,883	1,198	7,693
DULLES INTERCEPTOR		7,682		7,682
HORSEPEN	30		208	238
LITTLE FALLS	2,581	121	2,975	5,677
LOWER ANACOSTIA	344	8,675	540	9,559
MATTAWOMAN	3,048	2		3,050
MUDDY BRANCH	3,602			3,602
NORTHEAST BRANCH	1,265	369,653	4,668	375,586
NORTHWEST BRANCH	4,512	10,121	2,193	16,826
OXON RUN	16,996	2,138	5,146	24,280
PAINT BRANCH	6,658	9,761	3,621	20,040
PARKWAY	886	4,733	1,090	6,709
PATUXENT CENTER	1,286	275		1,561
PATUXENT NORTH	1,265,019	15		1,265,034
PISCATAWAY CREEK	15,975	648,867	4,866,456	5,531,298
ROCK CREEK	9,519	11,174	15,092	35,785
ROCK RUN		35	50	85
SENECA CREEK	2,884	23,562	938	27,384
SLIGO CREEK	5,595	2,401	540	8,536
WATTS BRANCH	72	350	1	423
WESTERN BRANCH	5,265	4,552	121,746	131,563
TOTALS	1,997,293	2,107,687	5,171,141	9,276,121